
Product Datasheet

**phospho-Sphingosine Kinase 1 antibody
(orb109017)**

Description

Rabbit polyclonal to phospho-Sphingosine Kinase 1

Blocking Peptide + -

Species/Host

Rabbit

Reactivity

Mouse

Conjugation

Unconjugated

Tested

WB

Applications
Preservatives

Provided as solution in phosphate buffered saline with 0.08% sodium azide

Form/Appearance

Provided as solution in phosphate buffered saline with 0.08% sodium azide

Concentration

Lot Specific. See vial for concentration

Storage

Product should be stored at -20°C. Aliquot to avoid freeze/thaw cycles

Note

For research use only

Application notes

Antibody can be used for Western blotting (1-5µg/ml). Antibody shows some cross reactivity (~10% by ELISA) with other phosphoserine containing proteins. Optimal concentration should be evaluated by serial dilutions.

Isotype

IgG

Source

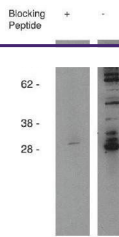
Rabbits were immunized with a synthetic peptide incorporating the serine 225 phosphorylation site of mouse sphingosie kinase 1

Uniprot ID
[Q8CI15](#)
Hazard Information

This product is intended FOR RESEARCH USE ONLY, and FOR TESTS IN VITRO, not for use in diagnostic or therapeutic procedures involving humans or animals.

Expiration Date

12 months from date of receipt.



Western blot analysis of mouse B-cell ly...