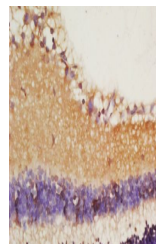


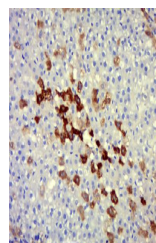
Product Datasheet

IL18 antibody (orb10899)

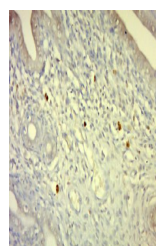
Description	IL18 antibody
Species/Host	Rabbit
Reactivity	Human
Conjugation	Unconjugated
Tested Applications	WB
Immunogen	KLH conjugated synthetic peptide derived from mouse IL-18 (51-120/192 aa)
Target	IL18
Preservatives	0.01M TBS(pH7.4) with 1% rAlbumin, 0.03% Proclin300 and 50% Glycerol.
Form/Appearance	Liquid: 0.01M TBS(pH7.4) with 1% rAlbumin, 0.03% Proclin300 and 50% Glycerol.
Concentration	1mg/ml
Storage	Shipped at 4°C. Store at -20 °C for one year. Avoid repeated freeze/thaw cycles.
Note	For research use only
Isotype	IgG
Clonality	Polyclonal
Purity	affinity purified by Protein A
MW	22kDa
Uniprot ID	P97636
Dilution Range	WB=1:500-2000
Expiration Date	12 months from date of receipt.



IHC-P image of rat retina tissue using I...



IHC-P image of rat liver tissue using IL...



IHC-P image of rat uterus tissue using I...