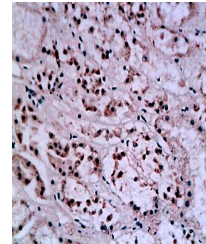


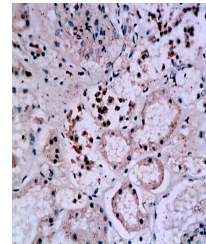
Product Datasheet

IL12 antibody (orb10894)

| | |
|----------------------------|---|
| Description | IL12 antibody |
| Species/Host | Rabbit |
| Reactivity | Human |
| Conjugation | Unconjugated |
| Tested Applications | IF, WB |
| Immunogen | KLH conjugated synthetic peptide derived from human IL-12 (51-150/219 aa) |
| Target | IL12 |
| Preservatives | 0.01M TBS(pH7.4) with 1% rAlbumin, 0.03% Proclin300 and 50% Glycerol. |
| Form/Appearance | Liquid |
| Concentration | 1mg/ml |
| Storage | Shipped at 4°C. Store at -20 °C for one year. Avoid repeated freeze/thaw cycles. |
| Note | For research use only |
| Isotype | IgG |
| Clonality | Polyclonal |
| MW | 23 kDa |
| Uniprot ID | P43431 |
| Dilution Range | WB=1:500-2000, IF=1:100-500, IHC-P=1:100-500, IHC-F=1:100-500, ELISA=1:5000-10000 |
| Expiration Date | 12 months from date of receipt. |



Immunohistochemical analysis of paraffin...



IHC-P of human normal kidney tissue (IL1...