
Product Datasheet

IGF1 antibody (orb10886)

Description

IGF1 antibody

Species/Host

Rabbit

Reactivity

Bovine, Canine, Human, Mouse, Porcine, Rat, Sheep

Conjugation

Unconjugated

Tested

ELISA, ICC, IF, IHC-P, WB

Applications
Immunogen

KLH conjugated synthetic peptide derived from human IGF1. Please contact us for the exact immunogen sequence. The peptide is available as orb374728.

Target

IGF1

Form/Appearance

10 mM PBS, 0.02% sodium azide

Concentration

- 100 µg (in 200 µl): 0.5 mg/ml- 200 µg (in 400 µl): 0.5 mg/ml

Storage

Store at 4°C for up to two weeks. For long term storage, aliquot and store at -20°C, avoid freeze/thaw cycles.

Note

For research use only

Isotype

IgG

Clonality

Polyclonal

Purity

Polyclonal antibodies are purified by peptide affinity chromatography

MW

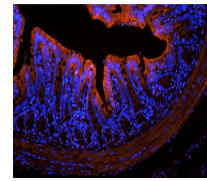
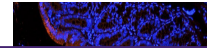
22 kDa

Uniprot ID
[P08025](#), [P05019](#), [P05017](#)
NCBI
[31](#), [000618](#), [000609](#), [11](#)
Entrez
[3479](#)
Dilution Range

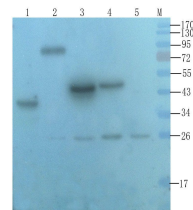
IF/ICC: 1:100-800, IHC-P: 1:100-800, WB: 1:200-1000

Expiration Date

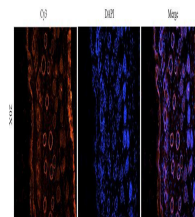
12 months from date of receipt.



IF analysis of rat colon tissue using IGF1 antibody



Western blot analysis of mouse liver (lane 1) and mouse liver (lane 2) using IGF1 antibody



Immunofluorescence analysis of mouse skin using IGF1 antibody