
Product Datasheet

Rat IgG2a Isotype Control FITC Antibody (orb1088487)

Description

Rat IgG2a Isotype Control FITC

Conjugation

FITC

Tested Applications

FC

Preservatives

Phosphate buffered saline (PBS), pH 7.4, 15 mM sodium azide

Concentration

1 mg/ml

Storage

Store at 2-8°C. Protect from prolonged exposure to light. Do not freeze.

Note

For research use only

Application notes

Negative control: The reagent is intended as an isotype control to establish the amount of non-specific antibody binding. For your particular experiment, use the same concentration of this control antibody as the recommended working concentration of the antigen-specific antibody. Also, when working with prediluted antibodies, dilute the isotype control to the same concentration as is the concentration of the antigen-specific antibody in the prediluted antibody solution you are using. If under particular experimental conditions the background signal of the isotype control is too high (usually when working concentrations of used antibodies are above 10 µg/ml of incubation mixture), change the conditions of your experiment to reduce the background.

Isotype

Rat IgG2a

Clonality

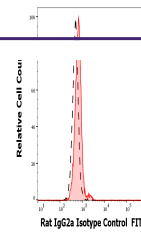
Monoclonal

Purity

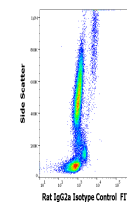
Purified antibody is conjugated with fluorescein isothiocyanate (FITC) under optimum conditions and unconjugated antibody and free fluorochrome are removed by size-exclusion chromatography.

Dilution Range

Negative control: The reagent is intended as an isotype control to establish the amount of non-specific antibody binding. For your particular experiment, use the same concentration of this control antibody as the recommended working concentration of the antigen-specific antibody. Also, when working with prediluted antibodies, dilute the isotype control to the same concentration as is the concentration of the antigen-specific antibody in the prediluted antibody solution you are using. If under particular experimental conditions the background signal of the isotype control is too



Separation of lymphocytes nonspecific stain...



Flow cytometry surface nonspecific stain...