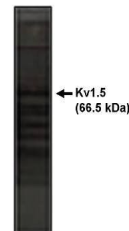


Product Datasheet

Kv1.5 Potassium Channel antibody (orb108845)

Description	Provided as solution in phosphate buffered saline with 0.08% sodium azide
Species/Host	Rabbit
Reactivity	Human, Mouse, Rat
Conjugation	Unconjugated
Tested Applications	WB
Concentration	See vial for concentration
Storage	Product should be stored at -20°C. Aliquot to avoid freeze/thaw cycles
Note	For research use only
Application notes	This antibody can be used for Western blotting (5-10 µg/ml). Optimal concentration should be evaluated by serial dilutions.
Isotype	IgG
Source	Rabbits were immunized with a synthetic peptide derived from the rat Kv1.5 potassium channel conjugated to KLH
Uniprot ID	P22460
Hazard Information	This product is intended FOR RESEARCH USE ONLY, and FOR TESTS IN VITRO, not for use in diagnostic or therapeutic procedures involving humans or animals.
Expiration Date	12 months from date of receipt.



Western blot analysis of rat brain lysat...