

Product Datasheet

MyoD1 antibody (orb108820)

Description

Purified monoclonal antibody 5.2F in phosphate

Species/Host

Mouse

Reactivity

Human, Mouse, Rat

Conjugation

Unconjugated

Tested Applications

ELISA, ICC, IF, IHC-Fr, IHC-P, IP, WB

Immunogen

Recombinant mouse MyoD1 protein.

Concentration

See vial for concentration

Storage

Product should be stored at -20°C. Aliquot to avoid freeze/thaw cycles

Note

For research use only

Application notes

This antibody can be used for electron microscopy, ELISA, immunofluorescence, immunoprecipitation (2 µg/mg of protein lysate), Western blotting (1 µg/ml) and immunohistochemistry on frozen and formalin/paraffin fixed tissues (2-4 µg/ml). These working concentrations are merely an indication. Optimal working concentrations should, however, be evaluated by serial dilutions by the customer.

Isotype

IgG2a

Clonality

Monoclonal

Source

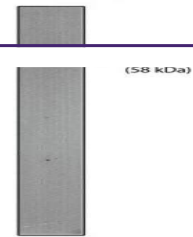
Hybridoma produced by the fusion of splenocytes from BALB/c mice immunized with recombinant mouse MyoD1 protein and mouse myeloma Sp2/0-Ag14 cells.

Uniprot ID
[P15172](#), [P10085](#), [P16075](#), [Q02346](#)
Hazard Information

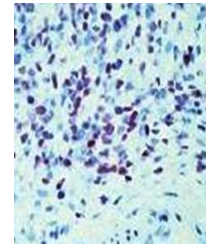
This product is intended FOR RESEARCH USE ONLY, and FOR TESTS IN VITRO, not for use in diagnostic or therapeutic procedures involving humans or animals.

Expiration Date

12 months from date of receipt.



Western blot analysis of MyoD1 protein u...



Immunohistochemical staining of human rh...