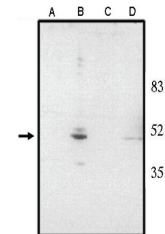


## Product Datasheet

### chx 10 antibody (orb108771)

<b>Description</b>	Ammonium sulphate precipitated antibody in PBS with 0.08% sodium azide
<b>Species/Host</b>	Sheep
<b>Reactivity</b>	Mouse, Rat
<b>Conjugation</b>	Unconjugated
<b>Tested Applications</b>	IHC-Fr, WB
<b>Concentration</b>	See vial for concentration
<b>Storage</b>	Product should be stored at -20°C. Aliquot to avoid freeze/thaw cycles
<b>Note</b>	For research use only
<b>Application notes</b>	Detects Chx10 by Western blot at 0.5 to 1 µg/ml. Detects a 46 kDa band in mouse and rat retinal tissue lysates. Optimal concentration should be evaluated by serial dilutions. Suitable for use against recombinant proteins conjugated to OVA, GST, His tags and other.
<b>Isotype</b>	IgG
<b>Source</b>	Antibody raised in sheep against a recombinant protein corresponding to amino acids 1 to 131 derived from the N-terminal region of the human Chx10 protein conjugated to KLH.
<b>Uniprot ID</b>	<b>P58304</b>
<b>Hazard Information</b>	This product is intended FOR RESEARCH USE ONLY, and FOR TESTS IN VITRO, not for use in diagnostic or therapeutic procedures involving humans or animals.
<b>Expiration Date</b>	12 months from date of receipt.



Western blot analysis of rat liver (Lane...)