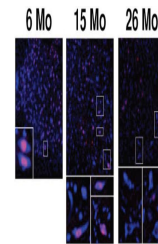


Product Datasheet

RED 1 antibody (orb108662)

Description	Provided as solution in phosphate buffered saline with 0.08% sodium azide
Species/Host	Sheep
Reactivity	Rat
Conjugation	Unconjugated
Tested Applications	WB
Form/Appearance	.
Concentration	See vial for concentration
Storage	Product should be stored at -20°C. Aliquot to avoid freeze/thaw cycles
Note	For research use only
Application notes	Suggested dilution for WB: 1:1000. Optimal concentration should be evaluated by serial dilutions.
Isotype	IgG
Source	Sheep were immunized with a GST fusion protein containing amino acid sequence 6-66 of rat RED1
Uniprot ID	P51400
Hazard Information	This product is intended FOR RESEARCH USE ONLY, and FOR TESTS IN VITRO, not for use in diagnostic or therapeutic procedures involving humans or animals.
Expiration Date	12 months from date of receipt.



Western blot analysis of mouse anterior ...