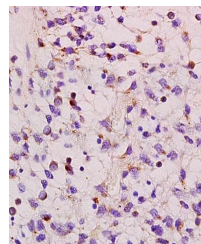


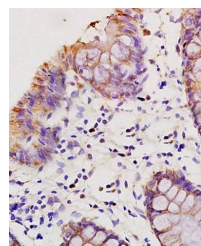
Product Datasheet

HMGA1 antibody (orb10826)

Description	HMGA1 antibody
Species/Host	Rabbit
Reactivity	Human
Conjugation	Unconjugated
Tested Applications	ELISA, IF, IHC-Fr, IHC-P, WB
Immunogen	KLH conjugated synthetic peptide derived from human HMGA1 (51-107/107 aa)
Target	HMGA1
Preservatives	0.01M TBS(pH7.4) with 1% rAlbumin, 0.03% Proclin300 and 50% Glycerol.
Form/Appearance	Liquid
Concentration	1mg/ml
Storage	Shipped at 4°C. Store at -20 °C for one year. Avoid repeated freeze/thaw cycles.
Note	For research use only
Isotype	IgG
Clonality	Polyclonal
MW	12 kDa
Uniprot ID	P17096
Expiration Date	12 months from date of receipt.



IHC-P of human colon carcinoma (HMGA1 antibody)



Immunohistochemical analysis of formalin-fixed paraffin-embedded (FFPE) tissue