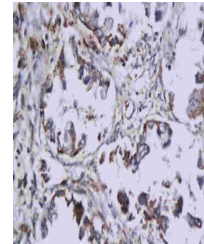


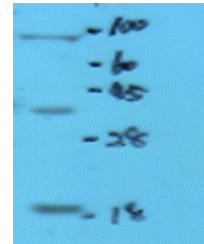
Product Datasheet

Histone H3 antibody (orb10805)

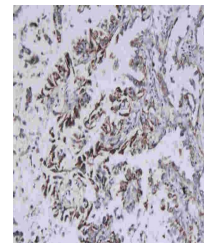
Description	Histone H3 antibody
Species/Host	Rabbit
Reactivity	Human, Mouse, Rat
Conjugation	Unconjugated
Tested Applications	FC, IF, IHC-P, WB
Immunogen	KLH conjugated synthetic peptide derived from human Histone H3 (71-136/136 aa)
Target	Histone H3 (Nuclear Loading Control)
Preservatives	0.01M TBS(pH7.4) with 1% rAlbumin, 0.03% Proclin300 and 50% Glycerol.
Form/Appearance	Liquid
Concentration	1mg/ml
Storage	Shipped at 4°C. Store at -20 °C for one year. Avoid repeated freeze/thaw cycles.
Note	For research use only
Isotype	IgG
Clonality	Polyclonal
MW	15 kDa
CAS Number	Histone H3.1
Uniprot ID	P68431
Dilution Range	WB=1:10000-50000, IHC-P=1:100-500, IF=1:100-500, Flow-Cyt=1µg/Test, IHC-F=1:100-500, ICC=1:100, ELISA=1:5000-10000
Expiration Date	12 months from date of receipt.



Immunohistochemical analysis of paraffin...



Western blot of rat liver tissue using H...



IHC-P of human adenocarcinoma using Hist...