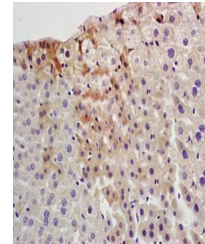


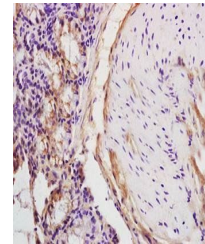
Product Datasheet

HCV antibody (orb10789)

Description	HCV antibody
Species/Host	Rabbit
Conjugation	Unconjugated
Tested Applications	ELISA
Immunogen	KLH conjugated synthetic peptide derived from HCV-NS3 (1451-1550/3010 aa)
Target	HCV NS3
Preservatives	0.01M TBS(pH7.4) with 1% rAlbumin, 0.03% Proclin300 and 50% Glycerol.
Form/Appearance	Liquid
Concentration	1mg/ml
Storage	Shipped at 4°C. Store at -20 °C for one year. Avoid repeated freeze/thaw cycles.
Note	For research use only
Isotype	IgG
Clonality	Polyclonal
MW	69 kDa
Uniprot ID	Q14SZ0
Expiration Date	12 months from date of receipt.



Immunohistochemical analysis of formalin...



IHC-P of rat colitis tissue (dilution at...