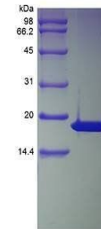


Product Datasheet

Human p16-INK4a-TAT protein (orb107793)

Description	Recombinant Human Cyclin-Dependent Kinase Inhibitor 2A, Isoform 1-TAT. Cyclin-dependent kinase inhib...
Conjugation	Unconjugated
Tested Applications	HPLC, SDS-PAGE
Target	p16-INK4a-TAT
Preservatives	Lyophilized from a 0.2 µm filtered concentrated solution in 2xPBS, pH 7.0.
Storage	Store at 4°C for up to two weeks. For long term storage, aliquot and store at -20°C, avoid freeze/thaw cycles.
Note	For research use only
Protein Sequence	EPAAGSSMEP SADWLATAAA RGRVEEVRAL LEAGALPNAP NSYGRRPQVMMMG SARVAE LLLLHGAEPN CADPATLTRP VHDAAREGFL DTLVVLHRAGARLDVRDAWG RLPVDLAEEL GHRDVARYLR AAAGGTRGSN HARIDAAEGPSDIPDGYGRK KRRQRRR
Purity	> 95% by SDS-PAGE and HPLC analyses.
MW	18.0 kDa
Expiration Date	6 months from date of receipt.



SDS-PAGE analysis of Human p16-INK4a-TAT...