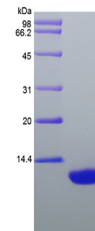


Product Datasheet

Rat CCL22 protein (orb107782)

Description	Recombinant Rat Macrophage-Derived Chemokine/CCL22. CCL22 is a protein encoded by the CCL22 gene. It...
Reactivity	Rat
Endotoxins	Less than 1 EU/μg of rRtMDC/CCL22 as determined by LAL method.
Conjugation	Unconjugated
Tested Applications	HPLC, SDS-PAGE
Target	CCL22/MDC
Preservatives	Lyophilized from a 0.2 μm filtered concentrated solution in 2xPBS, pH7.4
Storage	Store at 4°C for up to two weeks. For long term storage, aliquot and store at -20°C, avoid freeze/thaw cycles.
Note	For research use only
Protein Sequence	GPYGANVEDS ICCQDYIRHP LPPRFVKEFY WTSKSCRKPG VVLITIKNRD ICADPRMLWVKILHKLA
Purity	> 96% by SDS-PAGE and HPLC analyses
Source	E.coli
MW	7.9 kDa
Expiration Date	6 months from date of receipt.



SDS-PAGE analysis of Rat CCL22 protein