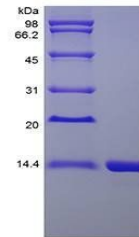


Product Datasheet

Rhesus IL-16 protein (orb107758)

Description	Interleukin-16 (IL-16) is also called lymphocyte chemoattractant factor (LCF) and it is mostly secre...
Conjugation	Unconjugated
Tested Applications	HPLC, SDS-PAGE
Target	IL-16
Preservatives	Lyophilized from a 0.2 µm filtered concentrated solution in PBS, pH 7.4.
Storage	Store at 4°C for up to two weeks. For long term storage, aliquot and store at -20°C, avoid freeze/thaw cycles.
Note	For research use only
Protein Sequence	SAASASAASD VSVESAEAT VYVTLEKMS AGLGFSLEGG KGSLHGDKPL TINRIFKGAASEQSETIQPG DEILQLAGTA MQGLTRFEAW NIIKALPDGP VTIVIRKSL QPKETTAAD S
Purity	> 98 % by SDS-PAGE and HPLC analyses
MW	12.5 kDa
Expiration Date	6 months from date of receipt.



SDS-PAGE analysis of Rhesus IL-16 protei...