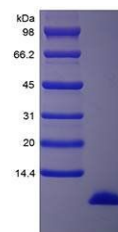


Product Datasheet

Human IGF-1 protein (orb107739)

Description	The Insulin-like Growth factors (IGFs) are mitogenic polypeptide growth factors that stimulate the p...
Conjugation	Unconjugated
Tested Applications	HPLC, SDS-PAGE
Target	IGF-1
Preservatives	Lyophilized from a 0.2 µm filtered concentrated solution in PBS, pH 7.2.
Storage	Store at 4°C for up to two weeks. For long term storage, aliquot and store at -20°C, avoid freeze/thaw cycles.
Note	For research use only
Protein Sequence	GPETLCGAEL VDALQFVCGD RGFYFNKPTG YGSSRRAPQ TGIVDECCFR SCDLRRLEMYCAPLPAKSA
Purity	> 97 % by SDS-PAGE and HPLC analyses
MW	7.7 kDa
Expiration Date	6 months from date of receipt.



SDS-PAGE analysis of Human IGF-1 protein