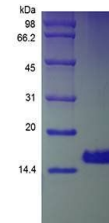


## Product Datasheet

### Human Amphiregulin protein (orb107683)

<b>Description</b>	Amphiregulin is an EGF related growth factor and was originally isolated from the conditioned media ...
<b>Conjugation</b>	Unconjugated
<b>Tested Applications</b>	HPLC, SDS-PAGE
<b>Target</b>	Amphiregulin
<b>Preservatives</b>	Lyophilized from a 0.2 µm filtered concentrated solution in PBS, pH 7.4.
<b>Storage</b>	Store at 4°C for up to two weeks. For long term storage, aliquot and store at -20°C, avoid freeze/thaw cycles.
<b>Note</b>	For research use only
<b>Protein Sequence</b>	SVRVEQVVKP PQNKTESENT SDKPKRKKKG GKNGKNRRNR KKKNPCNAEFQNFQIHGECK YIEHLEAVTC KCQQEYFGER CGEKSMKTHS MIDSSLK
<b>Purity</b>	> 95% by SDS-PAGE and HPLC analyses
<b>MW</b>	11.3kDa
<b>Expiration Date</b>	6 months from date of receipt.



SDS-PAGE analysis of Human Amphiregulin ...