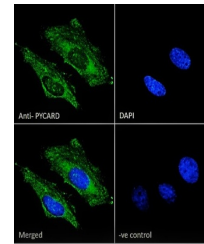


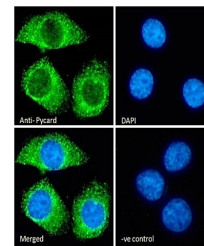
Product Datasheet

Pycard antibody (orb107673)

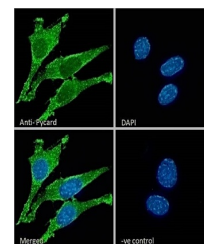
Description	Goat polyclonal to Pycard
Species/Host	Goat
Reactivity	Bovine, Canine, Human, Mouse, Porcine, Rat
Conjugation	Unconjugated
Tested Applications	ELISA, IF
Target	Pycard (rodent)
Preservatives	Supplied at 0.5 mg/ml in Tris saline, 0.02% sodium azide, pH 7.3 with 0.5% bovine serum albumin. Aliquot and store at -20°C. Minimize freezing and thawing.
Storage	Aliquot and store at -20°C. Minimize freezing and thawing.
Note	For research use only
Application notes	Notes: Immunofluorescence: Strong expression of the protein seen in the cytoplasm of NIH3T3, KNRK and HeLa cells. Recommended concentration: 10µg/ml.
Protein Sequence	DLTDKLVSYYLES
Clonality	Polyclonal
MW	21.5
Entrez	29108
Dilution Range	ELISA: 1:32000, IHC-P: 10) µg/ml
Expiration Date	12 months from date of receipt.



orb107673
Immunofluorescence
analysis of...



orb107673
Immunofluorescence
analysis of...



orb107673
Immunofluorescence
analysis of...