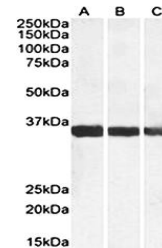


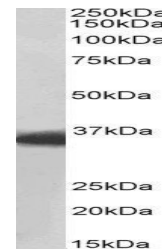
Product Datasheet

MDH1 antibody (orb107658)

Description	Goat polyclonal to MDH1
Species/Host	Goat
Reactivity	Bovine, Canine, Human, Mouse, Porcine, Rat
Conjugation	Unconjugated
Tested Applications	ELISA, WB
Target	MDH1 / MOR2
Preservatives	Supplied at 0.5 mg/ml in Tris saline, 0.02% sodium azide, pH 7.3 with 0.5% bovine serum albumin. Aliquot and store at -20°C. Minimize freezing and thawing.
Storage	Aliquot and store at -20°C. Minimize freezing and thawing.
Note	For research use only
Application notes	WB: Approx 36kDa band observed in Human, Mouse, Rat and Pig Heart lysates (calculated MW of 36.4kDa according to NP_005908.1). Recommended concentration: 0.01-0.03µg/ml.
Protein Sequence	TNCLTASKSAPSIPK
Clonality	Polyclonal
MW	38.6; 36.4; 27.0
Entrez	4190
Dilution Range	ELISA: 1:128000, WB: 0.01-0.03 µg/ml
Expiration Date	12 months from date of receipt.



Western blot analysis of Human (A), Mous...



Western blot analysis of staining of Pig...