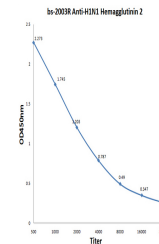


Product Datasheet

H1N1 HA2 antibody (orb10765)

Description	Influenza A virus is a major public health threat. Novel influenza virus strains caused by genetic d...
Species/Host	Rabbit
Conjugation	Unconjugated
Tested Applications	ELISA, WB
Immunogen	KLH conjugated synthetic peptide derived from Influenza A Virus Hemagglutinin (401-500/566 aa)
Target	H1N1 Hemagglutinin 2
Preservatives	0.01M TBS(pH7.4) with 1% rAlbumin, 0.03% Proclin300 and 50% Glycerol
Form/Appearance	Liquid
Concentration	1mg/ml
Storage	Shipped at 4°C. Store at -20 °C for one year. Avoid repeated freeze/thaw cycles
Note	For research use only
Isotype	IgG
Clonality	Polyclonal
Purity	Purified by Protein A
MW	63 kDa
Uniprot ID	P03452
Expiration Date	12 months from date of receipt.



Antigen:
0.2ug/100ul,
Primary:
Antiserum...