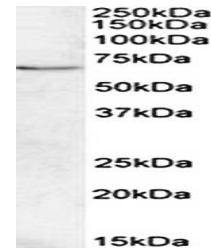


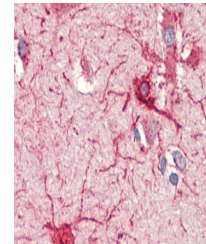
Product Datasheet

Crot antibody (orb107646)

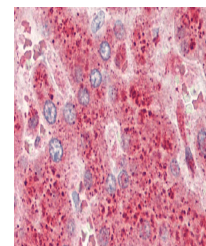
Description	Goat polyclonal to Crot
Species/Host	Goat
Reactivity	Canine, Mouse, Rat
Conjugation	Unconjugated
Tested Applications	ELISA, IHC, WB
Target	Crot (rat) (aa178-199)
Preservatives	Supplied at 0.5 mg/ml in Tris saline, 0.02% sodium azide, pH 7.3 with 0.5% bovine serum albumin. Aliquot and store at -20°C. Minimize freezing and thawing.
Storage	Aliquot and store at -20°C. Minimize freezing and thawing.
Note	For research use only
Application notes	WB: Approx 70kDa band observed in Mouse Liver lysates (calculated MW of 70.3kDa according to NP_114193.1). Recommended concentration: 1-3µg/ml. Primary incubation was 1 hour.. IHC: Paraffin embedded Human Brain (Cortex) and Liver. Recommended concentration: 5µg/ml.
Protein Sequence	NYFKTESEGHCPH
Clonality	Polyclonal
MW	70.3
Dilution Range	ELISA: 1:32000, WB: 1-3 µg/ml, IHC-P: 5 µg/ml
Expiration Date	12 months from date of receipt.



Western blot analysis of Mouse Liver Lys...



Immunohistochemical staining of Human Co...



Immunohistochemical staining of Human Li...