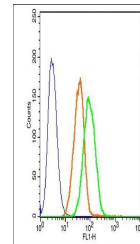


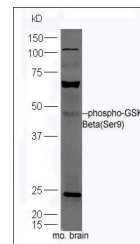
Product Datasheet

GSK3 beta (phospho-Ser9) antibody (orb10755)

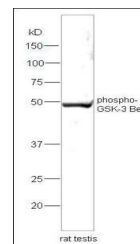
Description	GSK3 beta (phospho-Ser9) antibody
Species/Host	Rabbit
Reactivity	Human, Mouse, Rat
Conjugation	Unconjugated
Tested Applications	FC, ICC, IHC-P, WB
Immunogen	KLH conjugated Synthesised phosphopeptide derived from human GSK-3 Beta around the phosphorylation site of Ser9 (TT(p-S)FA)
Target	phospho-GSK-3 Beta (Ser9)
Preservatives	0.01M TBS(pH7.4) with 1% rAlbumin, 0.03% Proclin300 and 50% Glycerol.
Form/Appearance	Liquid
Concentration	1mg/ml
Storage	Shipped at 4°C. Store at -20 °C for one year. Avoid repeated freeze/thaw cycles.
Note	For research use only
Isotype	IgG
Clonality	Polyclonal
MW	47 kDa
Uniprot ID	P49841
Dilution Range	WB=1:500-2000, IHC-P=1:100-500, ICC=1:100, Flow-Cyt=1ug/Test, IHC-F=1:100-500, IF=1:100-500, ELISA=1:5000-10000
Expiration Date	12 months from date of receipt.



Flow cytometric analysis of unstained ce...



Western blot analysis of Mouse brain tis...



Western blot analysis of rat testis tiss...