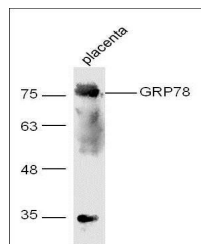


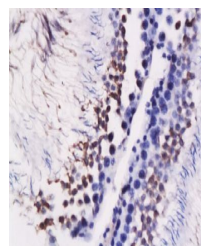
Product Datasheet

GRP78 antibody (orb10751)

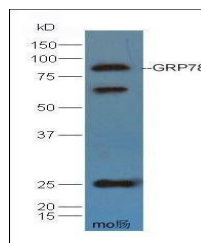
| | |
|----------------------------|--|
| Description | GRP78 antibody |
| Species/Host | Rabbit |
| Reactivity | Human, Mouse, Rat |
| Conjugation | Unconjugated |
| Tested Applications | IHC-P, WB |
| Immunogen | KLH conjugated synthetic peptide derived from human GRP78 (251-360/654 aa) |
| Target | GRP78 |
| Preservatives | 0.01M TBS(pH7.4) with 1% rAlbumin, 0.03% Proclin300 and 50% Glycerol. |
| Form/Appearance | Liquid |
| Concentration | 1mg/ml |
| Storage | Shipped at 4°C. Store at -20 °C for one year. Avoid repeated freeze/thaw cycles. |
| Note | For research use only |
| Isotype | IgG |
| Clonality | Polyclonal |
| MW | 78 kDa |
| Uniprot ID | P11021 |
| Dilution Range | WB=1:500-2000, IHC-P=1:100-500 |
| Expiration Date | 12 months from date of receipt. |



Western blot analysis of extracts from p...



Immunohistochemical staining of rat test...



Western blot analysis of mouse intestina...