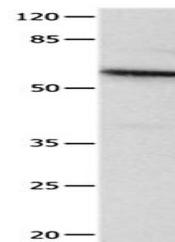


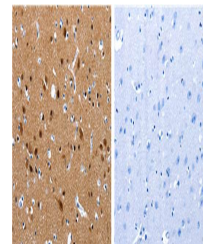
Product Datasheet

CRMP1 Antibody (orb107487)

Description	CRMP1 Antibody
Species/Host	Rabbit
Reactivity	Human, Mouse
Conjugation	Unconjugated
Tested Applications	ELISA, IHC, WB
Storage	Store at -20°C for long term preservation (recommended). Store at 4°C for short term use.
Note	For research use only
Clonality	Recombinant
Uniprot ID	Q14194
Expiration Date	12 months from date of receipt.



Western blot analysis of Gel: 10%SDS-PAG...



Immunohistochemical analysis of formalin...