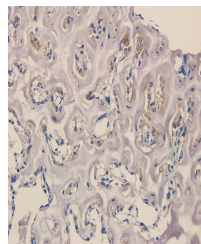


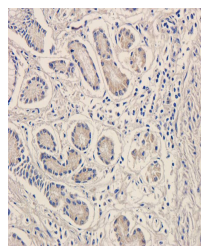
Product Datasheet

Gremlin 1 antibody (orb10741)

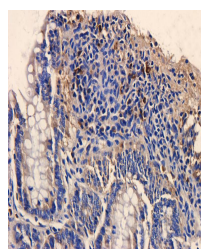
Description	Gremlin 1 antibody
Species/Host	Rabbit
Reactivity	Human, Mouse, Porcine, Rat
Conjugation	Unconjugated
Tested Applications	ICC, IF, IHC-P, WB
Immunogen	KLH conjugated synthetic peptide derived from human Gremlin 1. Please contact us for the exact immunogen sequence. The peptide is available as orb12894.
Target	Gremlin 1
Form/Appearance	10 mM PBS, 0.02% sodium azide
Concentration	- 100 µg (in 200 µl): 0.5 mg/ml- 200 µg (in 400 µl): 0.5 mg/ml
Storage	Store at 4°C for up to two weeks. For long term storage, aliquot and store at -20°C, avoid freeze/thaw cycles.
Note	For research use only
Isotype	IgG
Clonality	Polyclonal
Purity	Polyclonal antibodies are purified by peptide affinity chromatography
MW	21 kDa
Uniprot ID	O70326 , O60565 , O35793
Entrez	26585
Dilution Range	IF/ICC: 1:50-500, IHC-P: 1:50-500, WB: 1:200-1500
Expiration Date	12 months from date of receipt.



Immunohistochemical staining of mouse bo...



Immunohistochemical staining of pig stom...



IHC-P staining of rat colon tissue using...