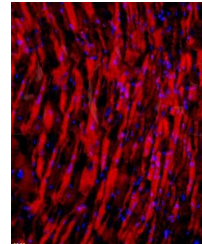


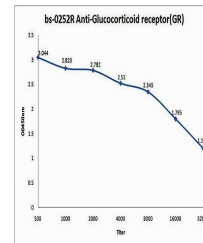
Product Datasheet

Glucocorticoid Receptor antibody (orb10736)

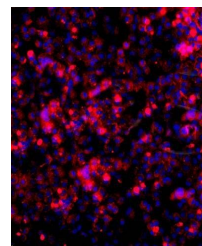
Description	Glucocorticoid Receptor antibody
Species/Host	Rabbit
Reactivity	Human, Mouse, Rat
Conjugation	Unconjugated
Tested Applications	FC, IHC-P
Immunogen	KLH conjugated synthetic peptide derived from human Glucocorticoid receptor (231-320/777 aa)
Target	Glucocorticoid receptor
Preservatives	0.01M TBS(pH7.4) with 1% rAlbumin, 0.03% Proclin300 and 50% Glycerol.
Form/Appearance	Liquid
Concentration	1mg/ml
Storage	Shipped at 4°C. Store at -20 °C for one year. Avoid repeated freeze/thaw cycles.
Note	For research use only
Isotype	IgG
Clonality	Polyclonal
MW	85 kDa
Uniprot ID	P04150
Dilution Range	IHC-P=1:100-500, Flow-Cyt=1µg/Test, IHC-F=1:100-500, ELISA=1:5000-10000
Expiration Date	12 months from date of receipt.



Immunohistochemical analysis of formalin...



Flow cytometric analysis of Glucocortic...



Paraffin-embedded human lung epithelial

...