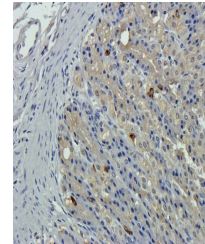


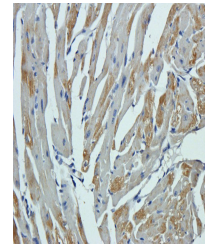
Product Datasheet

GPC3 antibody (orb10735)

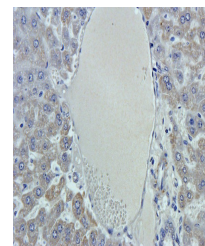
Description	GPC3 antibody
Species/Host	Rabbit
Conjugation	Unconjugated
Tested Applications	IHC-P, WB
Immunogen	KLH conjugated synthetic peptide derived from human GPC3. Please contact us for the exact immunogen sequence. The peptide is available as orb374726.
Target	GPC3
Form/Appearance	10 mM PBS, 0.02% sodium azide
Concentration	- 100 µg (in 200 µl): 0.5 mg/ml- 200 µg (in 400 µl): 0.5 mg/ml
Storage	Store at 4°C for up to two weeks. For long term storage, aliquot and store at -20°C, avoid freeze/thaw cycles.
Note	For research use only
Isotype	IgG
Clonality	Polyclonal
Purity	Polyclonal antibodies are purified by peptide affinity chromatography
MW	65 kDa
Uniprot ID	P51654, Q8CFZ4, P13265
Entrez	2719
Dilution Range	IHC-P: 1:100-600 (based on 0.5 mg/ml)
Expiration Date	12 months from date of receipt.



Immunohistochemical staining of rat stom...



IHC-P staining of mouse heart tissue usi...



Immunohistochemical staining of paraffin...