

Product Datasheet

GLP2 antibody (orb10724)

Description

GLP2 antibody

Species/Host

Rabbit

Reactivity

Guinea pig, Human, Mouse, Porcine, Rat

Conjugation

Unconjugated

Tested Applications

ICC, IF, IHC-P, WB

Immunogen

KLH conjugated synthetic peptide derived from human GLP2. Please contact us for the exact immunogen sequence. The peptide is available as orb393915.

Target

GLP2

Form/Appearance

10 mM PBS, 0.02% sodium azide

Concentration

- 100 µg (in 200 µl): 0.5 mg/ml- 200 µg (in 400 µl): 0.5 mg/ml

Storage

Store at 4°C for up to two weeks. For long term storage, aliquot and store at -20°C, avoid freeze/thaw cycles.

Note

For research use only

Isotype

IgG

Clonality

Polyclonal

Purity

Polyclonal antibodies are purified by peptide affinity chromatography

MW

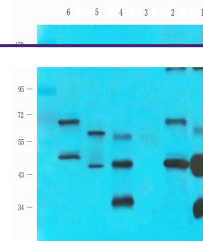
63 kDa

Uniprot ID
[P55095](#), [P06883](#), [P01275](#)
NCBI
[002054](#), [002045](#)
Entrez
[2641](#)
Dilution Range

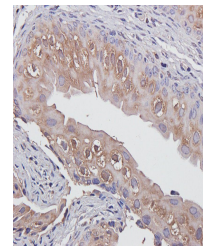
IF/ICC: 1:100-500, IHC-P: 1:100-500, WB: 1:200-1000

Expiration Date

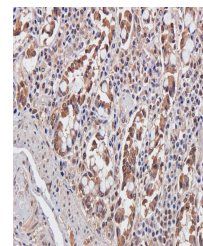
12 months from date of receipt.



WB analysis of rat heart (lane 1), mous...



Immunohistochemical staining of paraffin...



Immunohistochemical staining of paraffin...