
Product Datasheet

Matrix metalloproteinase-14 MMP14 Antibody (orb107165)

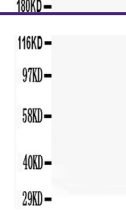
Description

Matrix metalloproteinase-14 MMP14 Antibody

1 2 3 4

Species/Host

Rabbit


Reactivity

Human, Mouse, Rat

Conjugation

Unconjugated

Tested

IHC, WB

Applications

Western blot analysis using Anti-MMP14 a...

Immunogen

A synthetic peptide corresponding to a sequence at the C-terminus of human MMP14 (567-582aa TPRRLLYCQRSLLDKV), different from the related mouse and rat sequences by one amino acid.

Form/Appearance

Lyophilized

Concentration

Adding 0.2 ml of distilled water will yield a concentration of 500 µg/ml.

Storage

Store at -20°C for one year from date of receipt. After reconstitution, at 4°C for one month. It can also be aliquotted and stored frozen at -20°C for six months. Avoid repeated freeze-thaw cycles.



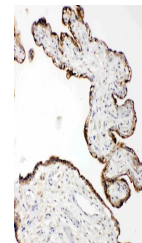
IHC(P) analysis of Human Intestinal Canc...

Note

For research use only

Application notes

Tested Species: In-house tested species with positive results. Predicted Species: Species predicted to be fit for the product based on sequence similarities. By Heat: Boiling the paraffin sections in 10mM citrate buffer, pH6.0, for 20mins is required for the staining of formalin/paraffin sections. Other applications have not been tested. Optimal dilutions should be determined by end users. . Add 0.2ml of distilled water will yield a concentration of 500ug/ml.



IHC(P) analysis of Human Placenta Tissue...

Isotype

Rabbit IgG

Clonality

Polyclonal

MW

65894 MW

Uniprot ID
P50281
Expiration Date

12 months from date of receipt.