

Product Datasheet

Anti-Collagen I/COL1A1 Antibody (orb107158)

Description	Anti-Collagen I/COL1A1 Antibody
Species/Host	Rabbit
Reactivity	Human, Mouse, Rat
Conjugation	Unconjugated
Tested Applications	ICC, IF, IHC, WB
Immunogen	A synthetic peptide corresponding to a sequence at the C-terminus of mouse Collagen I, identical to the related rat sequence, and different from the related human sequence by two amino acids.
Form/Appearance	Lyophilized
Concentration	Adding 0.2 ml of distilled water will yield a concentration of 500 µg/ml.
Storage	Maintain refrigerated at 2-8°C for up to 2 weeks. For long term storage store at -20°C in small aliquots to prevent freeze-thaw cycles.
Note	For research use only
Application notes	Western blot, 0.1-0.5µg/ml, Human, Mouse, Rat Immunohistochemistry (Paraffin-embedded Section), 1-2µg/ml, Human, Mouse, Rat Immunocytochemistry/Immunofluorescence , 5µg/ml, Mouse Immunofluorescence, 5µg/ml, Human, Mouse, Rat. Add 0.2ml of distilled water will yield a concentration of 500ug/ml
Isotype	Rabbit IgG
Clonality	Polyclonal
MW	130 kDa, 220 kDa
Uniprot ID	P11087

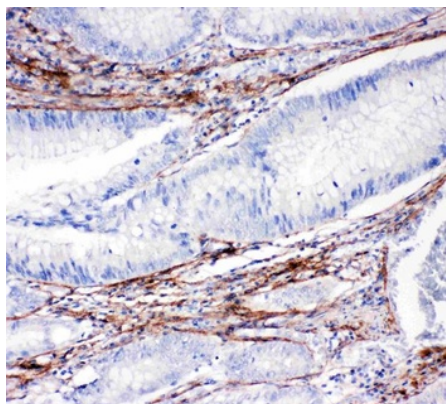
Biorbyt Ltd.

7 Signet Court, Swann's Road,
Cambridge, CB5 8LA, United Kingdom
Email: info@biorbyt.com, support@biorbyt.com
Phone: [+44 \(0\) 1223 859-353](tel:+441223859353) | Fax: [+1 \(415\) 651-8558](tel:+14156518558)

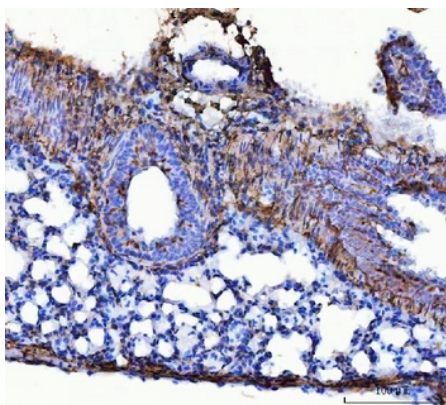
Biorbyt LLC.

68 TW Alexander Drive,
Durham, NC, 27713, United States
Email: info@biorbyt.com, support@biorbyt.com
Phone: [+1 \(415\) 906-5211](tel:+14159065211) | Fax: [+1 \(415\) 651-8558](tel:+14156518558)

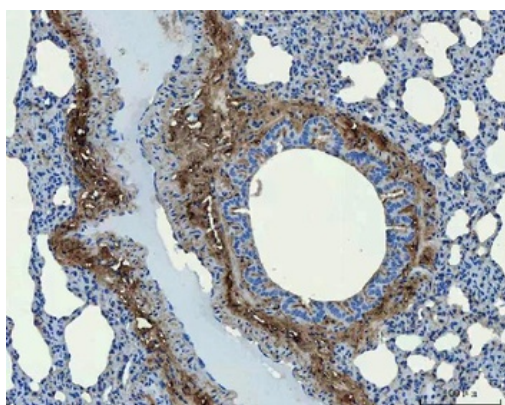
Expiration Date 12 months from date of receipt.



IHC analysis of Collagen I/COL1A1 using anti-Collagen I/COL1A1 antibody. Collagen I/COL1A1 was detected in paraffin-embedded section of Human Intestinal Cancer tissues.



IHC analysis of Collagen I/COL1A1 using anti-Collagen I/COL1A1 antibody. Collagen I/COL1A1 was detected in paraffin-embedded section of mouse lung tissues.



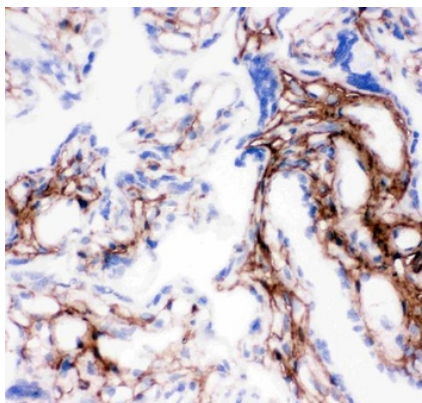
IHC analysis of Collagen I/COL1A1 using anti-Collagen I/COL1A1 antibody. Collagen I/COL1A1 was detected in paraffin-embedded section of rat lung tissues.

Biorbyt Ltd.

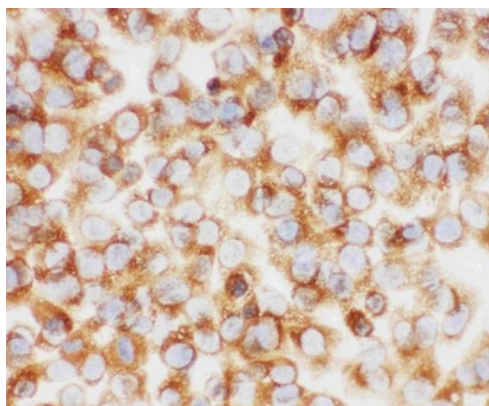
7 Signet Court, Swann's Road,
Cambridge, CB5 8LA, United Kingdom
Email: info@biorbyt.com, support@biorbyt.com
Phone: [+44 \(0\) 1223 859-353](tel:+44(0)1223859353) | Fax: [+1 \(415\) 651-8558](tel:+1(415)6518558)

Biorbyt LLC.

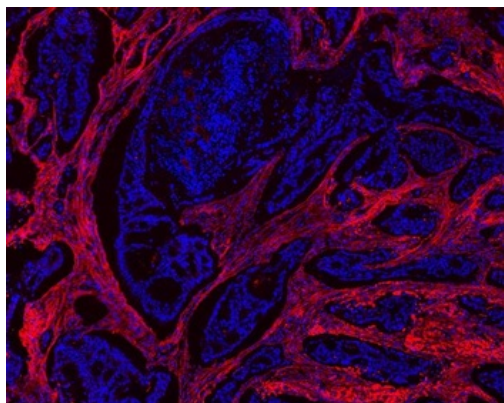
68 TW Alexander Drive,
Durham, NC, 27713, United States
Email: info@biorbyt.com, support@biorbyt.com
Phone: [+1 \(415\) 906-5211](tel:+1(415)9065211) | Fax: [+1 \(415\) 651-8558](tel:+1(415)6518558)



IHC analysis of Collagen I/COL1A1 using anti-Collagen I/COL1A1 antibody. Collagen I/COL1A1 was detected in frozen section of Human Placenta Tissue.



IHC analysis of Collagen I/COL1A1 using anti-Collagen I/COL1A1 antibody. Collagen I/COL1A1 was detected in immunocytochemical section of NIH3T3 Cell



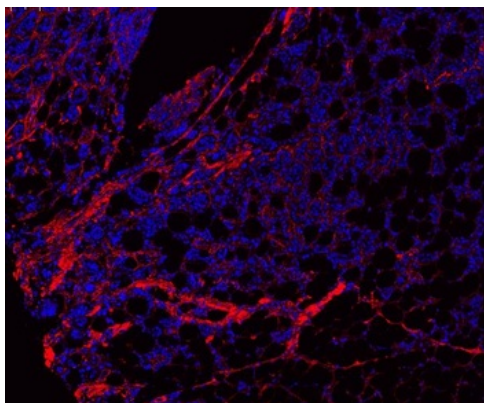
IF analysis of Collagen I/COL1A1 using anti-Collagen I/COL1A1 antibody. Collagen I/COL1A1 was detected in paraffin-embedded section of human mammary tissue tissues.

Biorbyt Ltd.

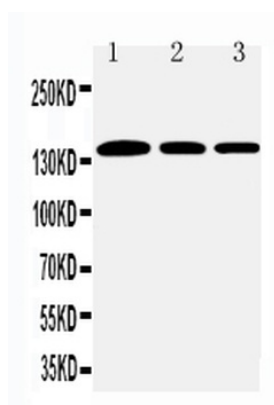
7 Signet Court, Swann's Road,
Cambridge, CB5 8LA, United Kingdom
Email: info@biorbyt.com, support@biorbyt.com
Phone: [+44 \(0\) 1223 859-353](tel:+44(0)1223859353) | Fax: [+1 \(415\) 651-8558](tel:+1(415)6518558)

Biorbyt LLC.

68 TW Alexander Drive,
Durham, NC, 27713, United States
Email: info@biorbyt.com, support@biorbyt.com
Phone: [+1 \(415\) 906-5211](tel:+1(415)9065211) | Fax: [+1 \(415\) 651-8558](tel:+1(415)6518558)



IF analysis of Collagen I/COL1A1 using anti-Collagen I/COL1A1 antibody. Collagen I/COL1A1 was detected in paraffin-embedded section of human tonsil tissues.



Western blot analysis of Collagen I/COL1A1 using anti-Collagen I/COL1A1 antibody.

Biorbyt Ltd.

7 Signet Court, Swann's Road,
Cambridge, CB5 8LA, United Kingdom
Email: info@biorbyt.com, support@biorbyt.com
Phone: [+44 \(0\) 1223 859-353](tel:+44(0)1223859353) | Fax: [+1 \(415\) 651-8558](tel:+1(415)6518558)

Biorbyt LLC.

68 TW Alexander Drive,
Durham, NC, 27713, United States
Email: info@biorbyt.com, support@biorbyt.com
Phone: [+1 \(415\) 906-5211](tel:+1(415)9065211) | Fax: [+1 \(415\) 651-8558](tel:+1(415)6518558)