
Product Datasheet

Connexin 43/GJA1 Antibody (orb107153)

Description

Connexin 43/GJA1 Antibody



Species/Host

Rabbit

Reactivity

Human, Mouse, Rat

Conjugation

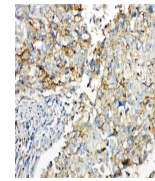
Unconjugated

Tested Applications

ICC, IHC, WB

Immunogen

A synthetic peptide corresponding to a sequence at the C-terminus of human Connexin 43 (351-367aa HELQPLAIVDQRPSRA), identical to the related rat and mouse sequences.



IHC analysis of Connexin 43/GJA1 using a...

Form/Appearance

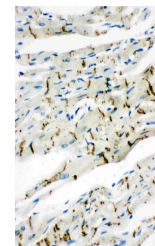
Lyophilized

Concentration

Adding 0.2 ml of distilled water will yield a concentration of 500 µg/ml.

Storage

Store at -20°C for one year from date of receipt. After reconstitution, at 4°C for one month. It can also be aliquotted and stored frozen at -20°C for six months. Avoid repeated freeze-thaw cycles.



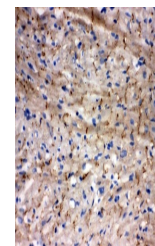
IHC analysis of Connexin 43/GJA1 using a...

Note

For research use only

Application notes

Tested Species: In-house tested species with positive results. Predicted Species: Species predicted to be fit for the product based on sequence similarities. By Heat: Boiling the paraffin sections in 10mM citrate buffer, pH6.0, for 20mins is required for the staining of formalin/paraffin sections. Other applications have not been tested. Optimal dilutions should be determined by end users. . Add 0.2ml of distilled water will yield a concentration of 500ug/ml.



IHC analysis of Connexin 43/GJA1 using a...

Isotype

Rabbit IgG

Clonality

Polyclonal

MW

43008 MW

Uniprot ID

P17302

Expiration Date

12 months from date of receipt.