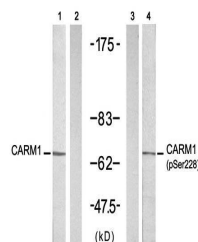


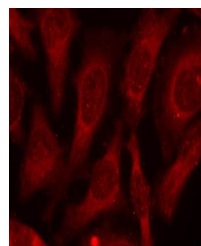
Product Datasheet

CARM1(Phospho-Ser228) antibody (orb107139)

Description	CARM1(Phospho-Ser228) antibody
Species/Host	Rabbit
Reactivity	Human, Mouse, Rat
Conjugation	Unconjugated
Tested Applications	IF, WB
Storage	Store at -20°C for long term preservation (recommended). Store at 4°C for short term use.
Note	For research use only
Clonality	Recombinant
Uniprot ID	Q86X55
Expiration Date	12 months from date of receipt.



Western blot analysis of extracts from A...



Confocal immunofluorescence analysis of ...