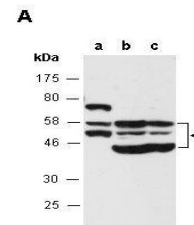


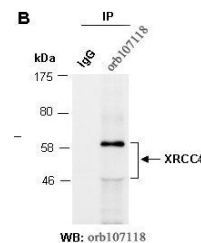
Product Datasheet

XRCC4 antibody (orb107118)

Description	Rabbit polyclonal to XRCC4. DNA repair protein XRCC4 is involved in DNA non-homologous end joining (...)
Species/Host	Rabbit
Reactivity	Human, Mouse
Conjugation	Unconjugated
Tested Applications	IP, WB
Immunogen	N-terminal region of human XRCC4
Preservatives	0.01% NaN ₃
Storage	-20°C
Note	For research use only
Clonality	Polyclonal
Purity	Affinity purification
MW	38
Uniprot ID	Q13426
Expiration Date	12 months from date of receipt.



Western blot of total cell extracts from...



IP-WB. Immunoprecipitation (IP) was perf...