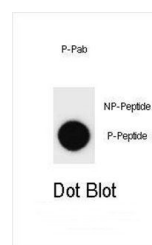
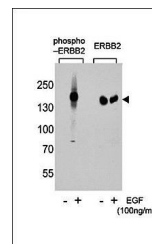


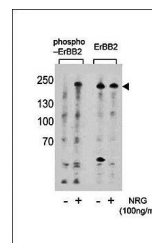
Product Datasheet

Phospho-ERBB2-Y877 antibody (orb107101)

Description	Rabbit polyclonal to Phospho-ERBB2-Y877
Species/Host	Rabbit
Reactivity	Human
Conjugation	Unconjugated
Tested Applications	DOT, WB
Immunogen	Synthetic Peptide
Target	ERBB2
Form/Appearance	Purified polyclonal antibody supplied in PBS with 0.09% (W/V) sodium azide. This antibody is purified through a protein A column, followed by peptide affinity purification.
Storage	Maintain refrigerated at 2-8°C for up to 2 weeks. For long term storage store at -20°C in small aliquots to prevent freeze-thaw cycles
Note	For research use only
Isotype	Rabbit IgG
Clonality	Polyclonal
MW	137910
Uniprot ID	P04626
NCBI	NP_004439.2 , NP_001005862.1
Dilution Range	DOT: 1:500, WB: 1:1000
Expiration Date	12 months from date of receipt.



Dot blot analysis of nitrocellulose memb...



Western blot analysis of T47D cells usin...