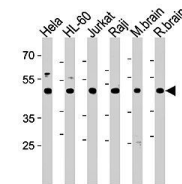
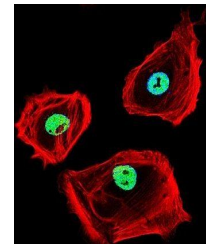


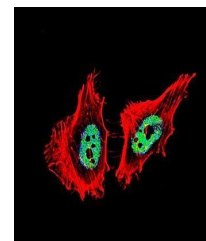
Product Datasheet

CTBP1 antibody (orb107063)

Description	Rabbit polyclonal to CTBP1. This gene encodes a protein that binds to the C-terminus of adenovirus E...
Species/Host	Rabbit
Reactivity	Human, Mouse, Rat
Conjugation	Unconjugated
Tested Applications	WB
Immunogen	Synthetic Peptide
Target	CTBP1
Form/Appearance	Purified polyclonal antibody supplied in PBS with 0.09% (W/V) sodium azide. This antibody is purified through a protein A column, followed by peptide affinity purification.
Storage	Maintain refrigerated at 2-8°C for up to 2 weeks. For long term storage store at -20°C in small aliquots to prevent freeze-thaw cycles
Note	For research use only
Isotype	Rabbit IgG
Clonality	Polyclonal
MW	47535
Uniprot ID	Q13363
NCBI	NP_001319.1 , NP_001012632.1
Dilution Range	WB: 1:1000, IF/ICC: 1:10-50
Expiration Date	12 months from date of receipt.



Western blot analysis of Hela, HL-60, Ju...



Confocal immunofluorescence analysis of ...