

Product Datasheet

GFAP antibody (orb10706)

Description

GFAP antibody

Species/Host

Rabbit

Reactivity

Human, Mouse, Rat

Conjugation

Unconjugated

Tested Applications

ELISA, ICC, IF, IHC-P, WB

Immunogen

KLH conjugated synthetic peptide derived from human GFAP. Please contact us for the exact immunogen sequence. The peptide is available as orb374725.

Target

GFAP

Form/Appearance

10 mM PBS, 0.02% sodium azide

Concentration

- 100 µg (in 200 µl): 0.5 mg/ml- 200 µg (in 400 µl): 0.5 mg/ml

Storage

Store at 4°C for up to two weeks. For long term storage, aliquot and store at -20°C, avoid freeze/thaw cycles.

Note

For research use only

Isotype

IgG

Clonality

Polyclonal

Purity

Polyclonal antibodies are purified by peptide affinity chromatography

MW

50 kDa

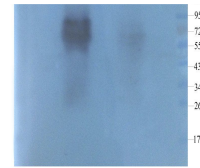
Uniprot ID
[P14136](#), [Q28115](#), [P03995](#)
Entrez
[2670](#)
Dilution Range

WB: 1:100-1000, IHC-P: 1:100-1000, IF/ICC: 1:100-1000 (based on 0.5mg/ml)

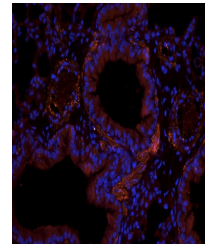
Expiration Date

12 months from date of receipt.

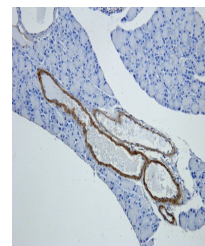
1 2 3 4 5 6



Western blot analysis of rat brain (lane...



Immunofluorescence analysis of mouse lun...



Immunohistochemical staining of paraffin...