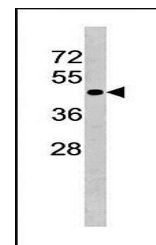
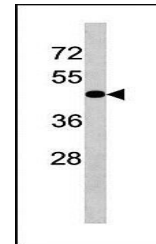


Product Datasheet

TGFBR1 antibody (orb107025)

Description	Rabbit polyclonal to TGFBR1. Transmembrane serine/threonine kinase forming with the TGF-beta type II...
Species/Host	Rabbit
Reactivity	Human, Mouse
Conjugation	Unconjugated
Tested Applications	WB
Immunogen	Synthetic Peptide
Target	TGFBR1
Form/Appearance	Purified polyclonal antibody supplied in PBS with 0.09% (W/V) sodium azide. This antibody is purified through a protein A column, followed by peptide affinity purification.
Storage	Maintain refrigerated at 2-8°C for up to 2 weeks. For long term storage store at -20°C in small aliquots to prevent freeze-thaw cycles
Note	For research use only
Isotype	Rabbit IgG
Clonality	Polyclonal
MW	55960
Uniprot ID	P36897
NCBI	NP_001124388.1 , NP_004603.1
Dilution Range	WB: 1:2000
Expiration Date	12 months from date of receipt.



Western blot analysis of HL-60 cell line...