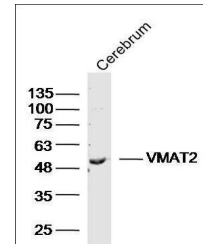


Product Datasheet

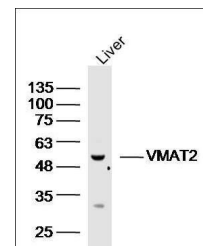
VMAT2 antibody (orb1070)

Description	VMAT2 antibody
Species/Host	Rabbit
Reactivity	Mouse
Conjugation	Unconjugated
Tested Applications	WB
Immunogen	KLH conjugated synthetic peptide derived from human VMAT2 (421-514/514 aa)
Target	VMAT2
Preservatives	0.01M TBS(pH7.4) with 1% rAlbumin, 0.03% Proclin300 and 50% Glycerol.
Form/Appearance	Liquid
Concentration	1mg/ml
Storage	Shipped at 4°C. Store at -20 °C for one year. Avoid repeated freeze/thaw cycles.
Note	For research use only
Isotype	IgG
Clonality	Polyclonal
MW	57 kDa
Uniprot ID	Q05940
Dilution Range	WB=1:500-2000
Expiration Date	12 months from date of receipt.

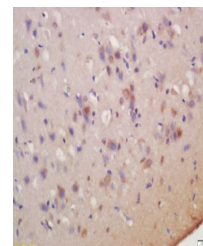


Western blot analysis of mouse Cerebrum

...



Western blot analysis of mouse Liver lys...



Immunohistochemical staining of rat brai...