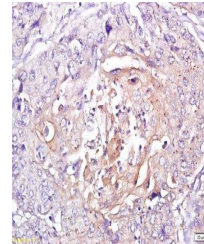


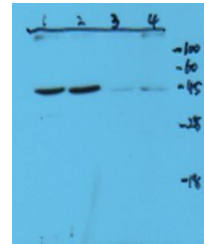
Product Datasheet

CXCR3 antibody (orb10696)

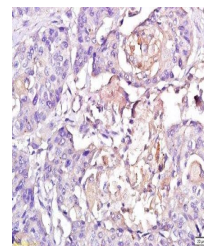
Description	CXCR3 antibody
Species/Host	Rabbit
Reactivity	Human
Conjugation	Unconjugated
Tested Applications	FC, IHC-P
Immunogen	KLH conjugated synthetic peptide derived from human CXCR3 (1-100/415 aa)
Target	CXCR3
Preservatives	0.01M TBS(pH7.4) with 1% rAlbumin, 0.03% Proclin300 and 50% Glycerol.
Form/Appearance	Liquid
Concentration	1mg/ml
Storage	Shipped at 4°C. Store at -20 °C for one year. Avoid repeated freeze/thaw cycles.
Note	For research use only
Isotype	IgG
Clonality	Polyclonal
MW	41 kDa
Uniprot ID	O88410
Dilution Range	IHC-P=1:100-500, Flow-Cyt=1µg/Test, WB=1:500-2000, IHC-F=1:100-500, IF=1:100-500, ELISA=1:5000-10000
Expiration Date	12 months from date of receipt.



Immunohistochemical analysis of paraffin...



Western Blot of human breast adenocarcin...



IHC-P of human esophagus cancer tissue (...)