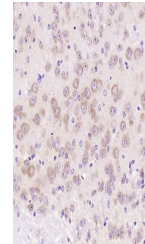


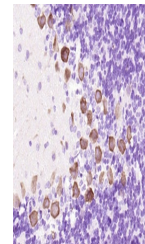
Product Datasheet

GAP43 (phospho-Ser41) antibody (orb10689)

Description	GAP43 (phospho-Ser41) antibody
Species/Host	Rabbit
Reactivity	Human, Mouse, Rat
Conjugation	Unconjugated
Tested Applications	FC, IHC-P
Immunogen	KLH conjugated Synthesised phosphopeptide derived from human GAP43 around the phosphorylation site of Ser41 (QA(p-S)FR)
Target	phospho-GAP43 (Ser41)
Preservatives	0.01M TBS(pH7.4) with 1% rAlbumin, 0.03% Proclin300 and 50% Glycerol.
Form/Appearance	Liquid
Concentration	1mg/ml
Storage	Maintain refrigerated at 2-8°C for up to 2 weeks. For long term storage store at -20°C in small aliquots to prevent freeze-thaw cycles.
Note	For research use only
Isotype	IgG
Clonality	Polyclonal
MW	46 kDa
Uniprot ID	P17677
Dilution Range	IHC-P=1:100-500, Flow-Cyt=0.2g /test, IHC-F=1:100-500, IF=1:100-500, ELISA=1:5000-10000
Expiration Date	12 months from date of receipt.



IHC-P analysis of mouse brain using phospho-GAP43 antibody



IHC-P analysis of rat cerebellum using phospho-GAP43 antibody