

## Product Datasheet

### CDH1 antibody (orb106878)

**Description** Mouse monoclonal to CDH1. Cadherins are calcium-dependent cell adhesion proteins. They preferentiall...

**Species/Host** Mouse

**Reactivity** Human, Mouse

**Conjugation** Unconjugated

**Tested Applications** IHC-P, WB

**Immunogen** Recombinant Protein

**Target** CDH1

**Form/Appearance** Purified monoclonal antibody supplied in PBS with 0.09% (W/V) sodium azide. This antibody is purified through a protein G column, followed by dialysis against PBS.

**Storage** Maintain refrigerated at 2-8°C for up to 2 weeks. For long term storage store at -20°C in small aliquots to prevent freeze-thaw cycles

**Note** For research use only

**Isotype** IgG1,k

**Clonality** Monoclonal

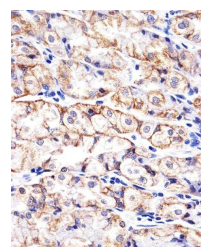
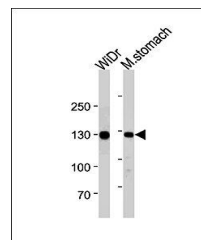
**MW** 97456

**Uniprot ID** [P12830](#)

**NCBI** [NP\\_004351.1](#)

**Dilution Range** IHC-P: 1:25, WB: 1:1000

**Expiration Date** 12 months from date of receipt.



Immunohistochemical analysis of formalin...