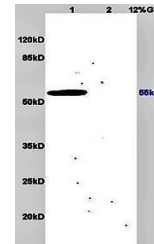


Product Datasheet

Measles virus antibody (orb10672)

| | |
|----------------------------|---|
| Description | Measles virus antibody |
| Species/Host | Rabbit |
| Conjugation | Unconjugated |
| Tested Applications | ELISA |
| Immunogen | KLH conjugated synthetic peptide derived from Measles virus fusion protein (451-550/550 aa) |
| Target | MeV F |
| Preservatives | 0.01M TBS(pH7.4) with 1% rAlbumin, 0.03% Proclin300 and 50% Glycerol. |
| Form/Appearance | Liquid |
| Concentration | 1mg/ml |
| Storage | Shipped at 4°C. Store at -20 °C for one year. Avoid repeated freeze/thaw cycles. |
| Note | For research use only |
| Isotype | IgG |
| Clonality | Polyclonal |
| MW | 57 kDa |
| Uniprot ID | P69353 |
| Expiration Date | 12 months from date of receipt. |



Western blot analysis of mouse brain lys...