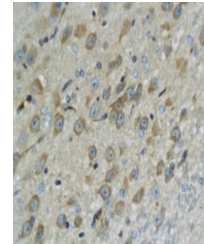


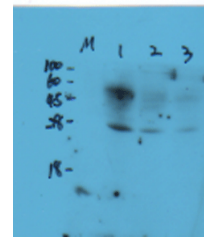
Product Datasheet

Caspase 8 antibody (orb10664)

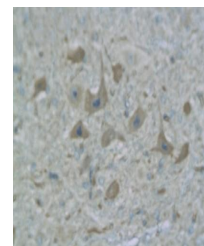
Description	Caspase 8 antibody
Species/Host	Rabbit
Reactivity	Human, Mouse, Rat
Conjugation	Unconjugated
Tested Applications	WB
Immunogen	KLH conjugated synthetic peptide derived from human CASP8 and FADD-like apoptosis regulator subunit p12 (Potential) (401-480/480 aa)
Target	FLIP
Preservatives	0.01M TBS(pH7.4) with 1% rAlbumin, 0.03% Proclin300 and 50% Glycerol.
Form/Appearance	Liquid
Concentration	1mg/ml
Storage	Shipped at 4°C. Store at -20 °C for one year. Avoid repeated freeze/thaw cycles.
Note	For research use only
Isotype	IgG
Clonality	Polyclonal
MW	12/52 kDa
Uniprot ID	O15519
Dilution Range	WB=1:500-2000
Expiration Date	12 months from date of receipt.



Immunohistochemical staining of paraffin...



Western blot of mouse liver tissue using...



IHC-P of rabbit brain tissue (orb10664 a...