
Product Datasheet

Filaggrin antibody (orb10662)

Description

Filaggrin antibody

Species/Host

Rabbit

Reactivity

Human, Mouse, Rat

Conjugation

Unconjugated

Tested

ELISA, IHC-P, WB

Applications
Immunogen

KLH conjugated synthetic peptide derived from human Filaggrin. Please contact us for the exact immunogen sequence. The peptide is available as orb374724.

Target

Filaggrin

Form/Appearance

10 mM PBS, 0.02% sodium azide

Concentration

- 100 µg (in 200 µl): 0.5 mg/ml- 200 µg (in 400 µl): 0.5 mg/ml

Storage

Store at 4°C for up to two weeks. For long term storage, aliquot and store at -20°C, avoid freeze/thaw cycles.

Note

For research use only

Isotype

IgG

Clonality

Polyclonal

Purity

Polyclonal antibodies are purified by peptide affinity chromatography

MW

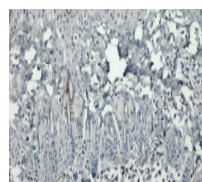
~34 kDa

Uniprot ID
[P20930](#), [P11088](#)
NCBI
[002007](#), [11](#), [002016](#)
Entrez
[2312](#)
Dilution Range

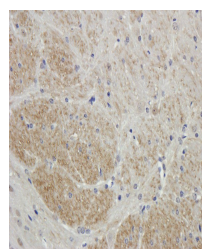
IHC-P: 1:100-500 (based on 0.5 mg/ml), WB: 1:100-500

Expiration Date

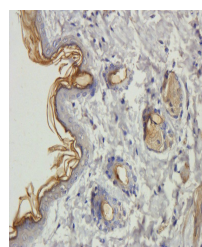
12 months from date of receipt.



Immunohistochemical staining of mouse sk...



Immunohistochemical staining of mouse br...



Immunohistochemical staining of paraffin...