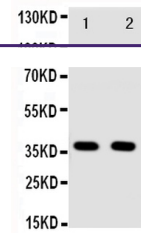
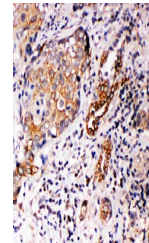

Product Datasheet

Annexin A10/ANXA10 Antibody (orb106584)

Description	Annexin A10/ANXA10 Antibody
Species/Host	Rabbit
Reactivity	Human, Rat
Conjugation	Unconjugated
Tested Applications	IHC, WB
Immunogen	A synthetic peptide corresponding to a sequence at the C-terminus of human Annexin A10 (308-324aa HYKKALLAICAGDAEDY), different from the related mouse sequence by two amino acids, and from the related rat sequence by one amino acid.
Form/Appearance	Lyophilized
Concentration	Adding 0.2 ml of distilled water will yield a concentration of 500 µg/ml.
Storage	Store at -20°C for one year from date of receipt. After reconstitution, at 4°C for one month. It can also be aliquotted and stored frozen at -20°C for six months. Avoid repeated freeze-thaw cycles.
Note	For research use only
Application notes	WB: The detection limit for ANXA10 is approximately 1ng/lane under reducing conditions. Tested Species: In-house tested species with positive results. Predicted Species: Species predicted to be fit for the product based on sequence similarities. By Heat: Boiling the paraffin sections in 10mM citrate buffer, pH6.0, for 20mins is required for the staining of formalin/paraffin sections. Other applications have not been tested. Optimal dilutions should be determined by end users. . Add 0.2ml of distilled water will yield a concentration of 500ug/ml.
Isotype	Rabbit IgG
Clonality	Polyclonal
MW	37278 MW
Uniprot ID	Q9UJ72
Sensitivity	> 5000 cells
Expiration Date	12 months from date of receipt.



Western blot analysis using Anti-Annexin...



IHC(P) analysis of Human Lung Cancer Tis...