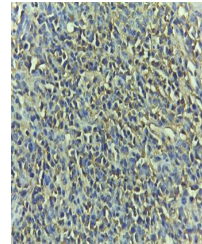


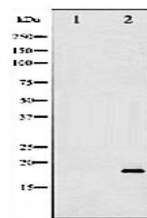
Product Datasheet

Cleaved-caspase 3 antibody (orb106556)

Description	Rabbit polyclonal antibody to Cleaved-caspase 3
Species/Host	Rabbit
Reactivity	Human, Mouse, Rat
Conjugation	Unconjugated
Tested Applications	IF, IHC-P, WB
Immunogen	A synthesized peptide derived from human CASP3, corresponding to amino acid residues 163-182aa
Form/Appearance	Rabbit IgG in phosphate buffered saline , pH 7.4, 150mM NaCl, 0.02% sodium azide and 50% glycerol
Storage	Stable for 12 months from date of receipt. Store at -20 °C. Stable for 12 months from date of receipt
Note	For research use only
Clonality	Polyclonal
Purity	The antiserum was purified by peptide affinity chromatography
MW	17kDa; 32kD(Calculated)
Dilution Range	WB 1:500-1:2000, IHC 1:50-1:200, IF/ICC 1:100-1:500
Expiration Date	12 months from date of receipt.



Immunohistochemical analysis of formalin...



Western blot analysis of extracts from C...