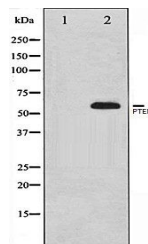


Product Datasheet

PTEN antibody (orb106459)

Description	Rabbit polyclonal to PTEN. PTEN a phosphoinositide 3-phosphatase (PIP3) and a tumor suppressor impli...
Species/Host	Rabbit
Reactivity	Human, Mouse, Rat
Conjugation	Unconjugated
Tested Applications	IHC-P, WB
Note	For research use only
Clonality	Polyclonal
Dilution Range	WB:1:500-1:2000, IHC-P:1:50-1:200
Expiration Date	12 months from date of receipt.



Western blot analysis of HeLa whole cell...