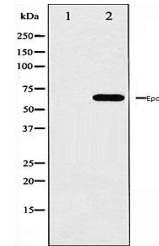


## Product Datasheet

### Epo-R antibody (orb106396)

<b>Description</b>	Rabbit polyclonal to Epo-R. Erythropoiesis is regulated through the interaction of erythropoietin (E...
<b>Species/Host</b>	Rabbit
<b>Reactivity</b>	Human, Mouse, Rat
<b>Conjugation</b>	Unconjugated
<b>Tested Applications</b>	ICC, IF, WB
<b>Note</b>	For research use only
<b>Clonality</b>	Polyclonal
<b>Dilution Range</b>	WB:1:500-1:2000, IF/ICC:1:100-1:500
<b>Expiration Date</b>	12 months from date of receipt.



Western blot analysis of COS7 whole cell...