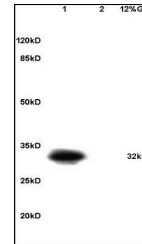


Product Datasheet

DARPP32 (phospho-Thr34) antibody (orb106284)

Description	DARPP32 (phospho-Thr34) antibody
Species/Host	Rabbit
Conjugation	Unconjugated
Tested Applications	ELISA
Immunogen	KLH conjugated Synthesised phosphopeptide derived from human DARPP32 around the phosphorylation site of Thr34 (RP(p-T)PA)
Target	Phospho-DARPP32 (Thr34)
Preservatives	0.01M TBS(pH7.4) with 1% rAlbumin, 0.03% Proclin300 and 50% Glycerol.
Form/Appearance	Liquid
Concentration	1mg/ml
Storage	Shipped at 4°C. Store at -20 °C for one year. Avoid repeated freeze/thaw cycles.
Note	For research use only
Isotype	IgG
Clonality	Polyclonal
MW	32 kDa
Uniprot ID	Q9UD71
Expiration Date	12 months from date of receipt.



Western blot analysis of mouse liver lys...