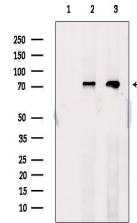


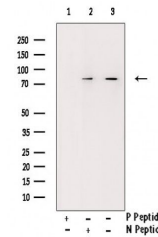
## Product Datasheet

# GTPase Activating Protein (Phospho-Ser387) antibody (orb106281)

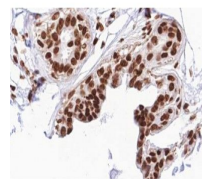
<b>Description</b>	Rabbit polyclonal to GTPase Activating Protein (Phospho-Ser387). Rho GTPases control a variety of ce...
<b>Species/Host</b>	Rabbit
<b>Reactivity</b>	Human, Mouse, Rat
<b>Conjugation</b>	Unconjugated
<b>Tested Applications</b>	ELISA, ICC, IF, IHC-P, WB
<b>Storage</b>	Maintain refrigerated at 2-8°C for up to 2 weeks. For long term storage store at -20°C in small aliquots to prevent freeze-thaw cycles.
<b>Note</b>	For research use only
<b>Clonality</b>	Polyclonal
<b>Dilution Range</b>	WB: 1:500-1:2000, IHC-P: 1:50-1:200, IF/ICC 1:100-1:500, ELISA(peptide): 1:20000-1:40000
<b>Expiration Date</b>	12 months from date of receipt.



Western blot analysis of Heat-shock treated cells



Western blot analysis of COS7 cells lysates



Immunohistochemical staining human breast tissue